



BANKHEAD HIGHWAY H. D.  
VARIOUS SECTIONS WEST & EAST of ABILENE  
TAYLOR CO., TEXAS

PHOTOGRAPH 1 of 15



BANKHEAD HIGHWAY H.D.  
VARIOUS SECTIONS WEST & EAST of ABILENE  
TAYLOR CO., TEXAS

PHOTOGRAPH 2 of 15







SECTION A, FAP 444 MARKER  
BANKHEAD HIGHWAY H.D.  
VARIOUS SECTIONS WEST & EAST of ABILENE  
TAYLOR COUNTY, TEXAS

PHOTOGRAPH 4 of 15





SECTION A  
BANKHEAD HIGHWAY H.D.  
VARIOUS SECTIONS WEST & EAST of ABILENE  
TAYLOR COUNTY, TEXAS

PHOTOGRAPH 5 of 15



SECTION A  
BANKHEAD HIGHWAY H. D.,  
VARIOUS SECTIONS WEST & EAST of ABILENE  
TAYLOR COUNTY, TEXAS  
PHOTOGRAPH 6 of 15



9-30-34

SECTION C  
BANKHEAD HIGHWAY H.D.  
VARIOUS SECTIONS WEST & EAST of ABILENE  
TAYLOR COUNTY, TEXAS

PHOTOGRAPH 7 of 15



9 30 '94

SECTION C  
BANKHEAD HIGHWAY H.D.  
VARIOUS SECTIONS WEST & EAST of ABILENE  
TAYLOR COUNTY, TEXAS

PHOTOGRAPHS 8 of 15





SECTION C

BANKHEAD HIGHWAY H.P.

VARIOUS SECTIONS WEST & EAST of ABILENE  
TAYLOR COUNTY, TEXAS

PHOTOGRAPH 9 of 15



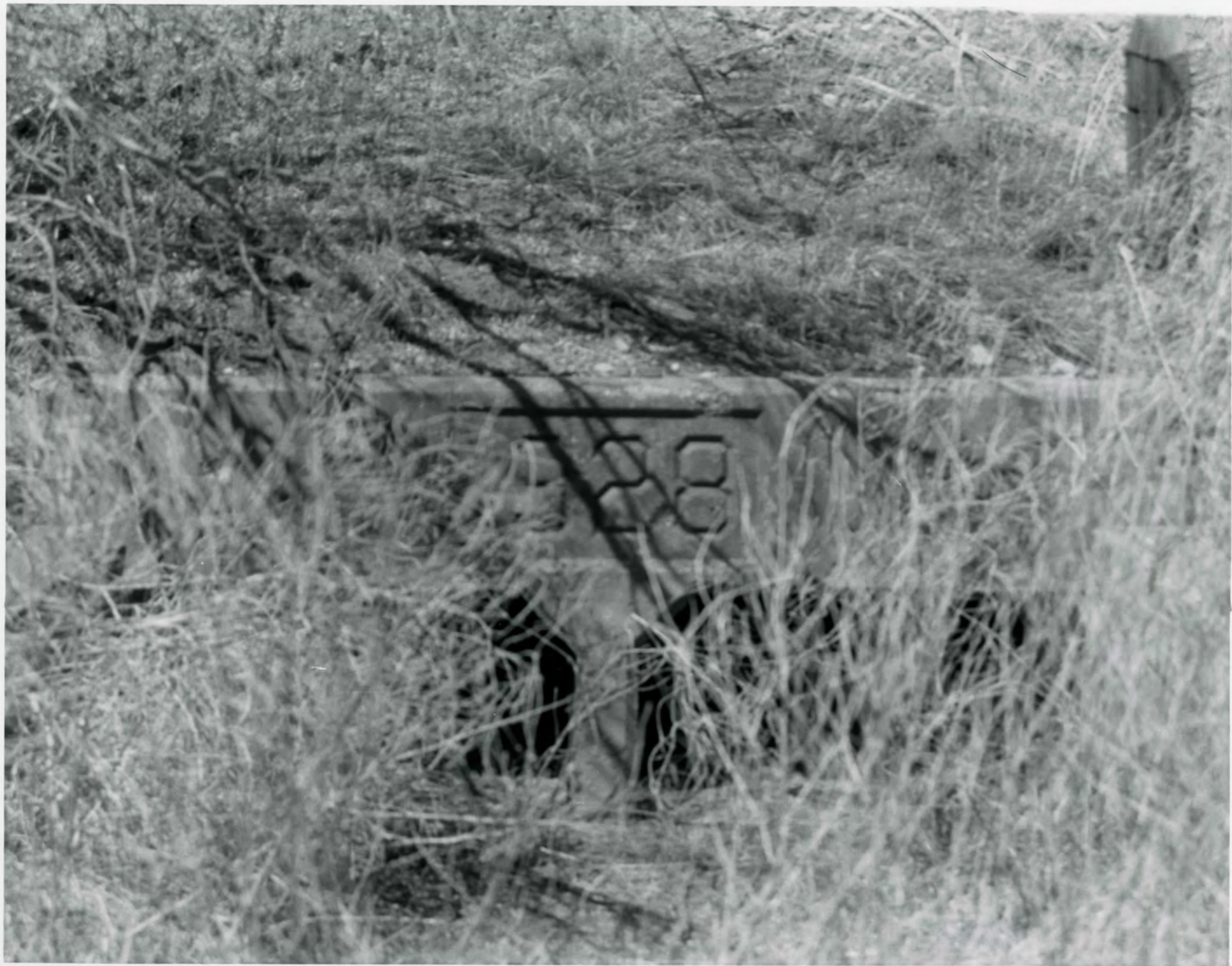
9 30 '94

SECTION C  
BANKHEAD HIGHWAY H.D.  
VARIOUS SECTIONS WEST & EAST of ABILENE  
TAYLOR COUNTY, TEXAS  
PHOTOGRAPH 10 of 15



SECTION C  
BANKHEAD HIGHWAY H.P.  
VARIOUS SECTIONS WEST & EAST of ABILENE  
TAYLOR COUNTY, TEXAS

PHOTOGRAPH 11 of 15



SECTION C  
BANKHEAD HIGHWAY H.D.  
VARIOUS SECTIONS WEST  $\frac{1}{2}$  EAST of ABILENE  
TAYLOR COUNTY, TEXAS

PHOTOGRAPH 12 of 15





9 30 '94

SECTION C  
BANKHEAD HIGHWAY H.D.  
VARIOUS SECTIONS WEST & EAST of ABILENE  
TAYLOR COUNTY, TEXAS

PHOTOGRAPH 13 of 15



9 30 '94

SECTION C

BANKHEAD HIGHWAY H.D.  
VARIOUS SECTIONS WEST & EAST of ABILENE  
TAYLOR COUNTY, TEXAS

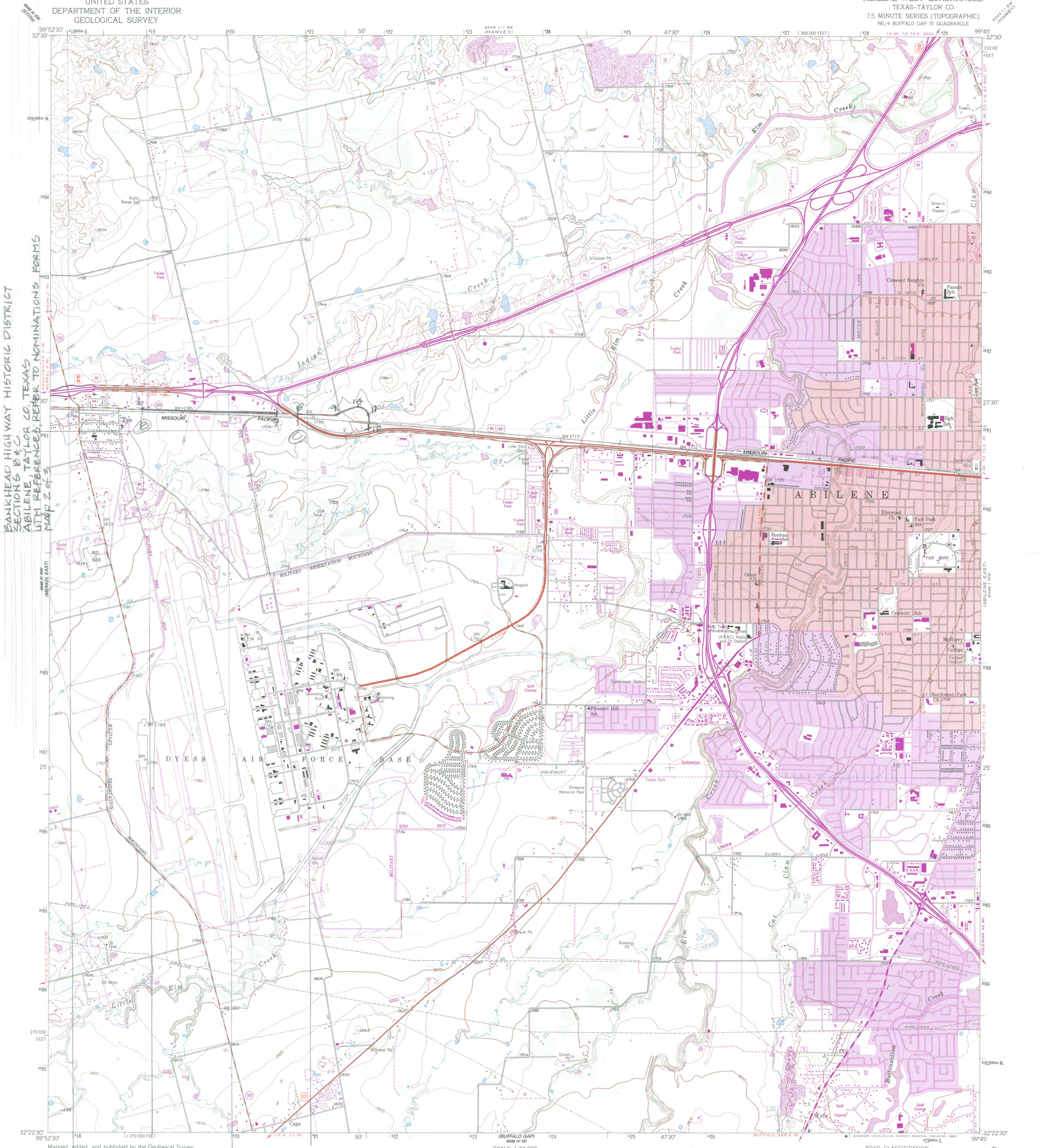
PHOTOGRAPH 14 of 15

45.021



SECTION D  
BANKHEAD HIGHWAY H.D.  
VARIOUS SECTIONS WEST & EAST of ABILENE  
TAYLOR COUNTY, TEXAS

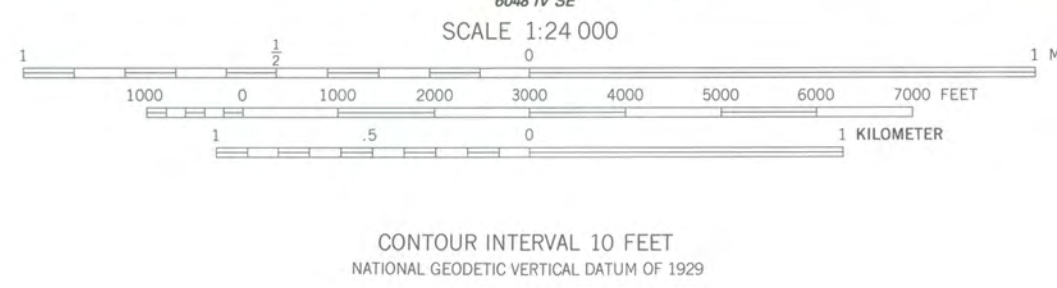
PHOTOGRAPH 15 of 15



BANKHEAD HIGHWAY HISTORIC DISTRICT  
SECTIONS B & C  
ABILENE TAYLOR CO TEXAS  
WITH REFERENCES REFER TO NOMINATIONS FORMS  
MAP 2 of 3

Mapped, edited, and published by the Geological Survey  
Control by USGS and NOS/NOAA  
Topography from aerial photographs by ER-55 plotter  
Aerial photographs taken 1954. Field check 1957  
Polyconic projection. 1927 North American datum  
10,000-foot grid based on Texas coordinate system,  
north central zone  
1000 meter Universal Transverse Mercator grid ticks,  
zone 14, shown in blue  
Red tint indicates areas in which only  
landmark buildings are shown  
To place on the predicted North American Datum 1983,  
move the projection lines 10 meters south and  
34 meters east as shown by dashed corner ticks

Revisions shown in purple compiled from aerial  
photographs taken 1984 and other sources  
This information not field checked. Map edited 1987  
Purple tint indicates extension of urban areas



CONTOUR INTERVAL 10 FEET  
NATIONAL GEODETIC VERTICAL DATUM OF 1929



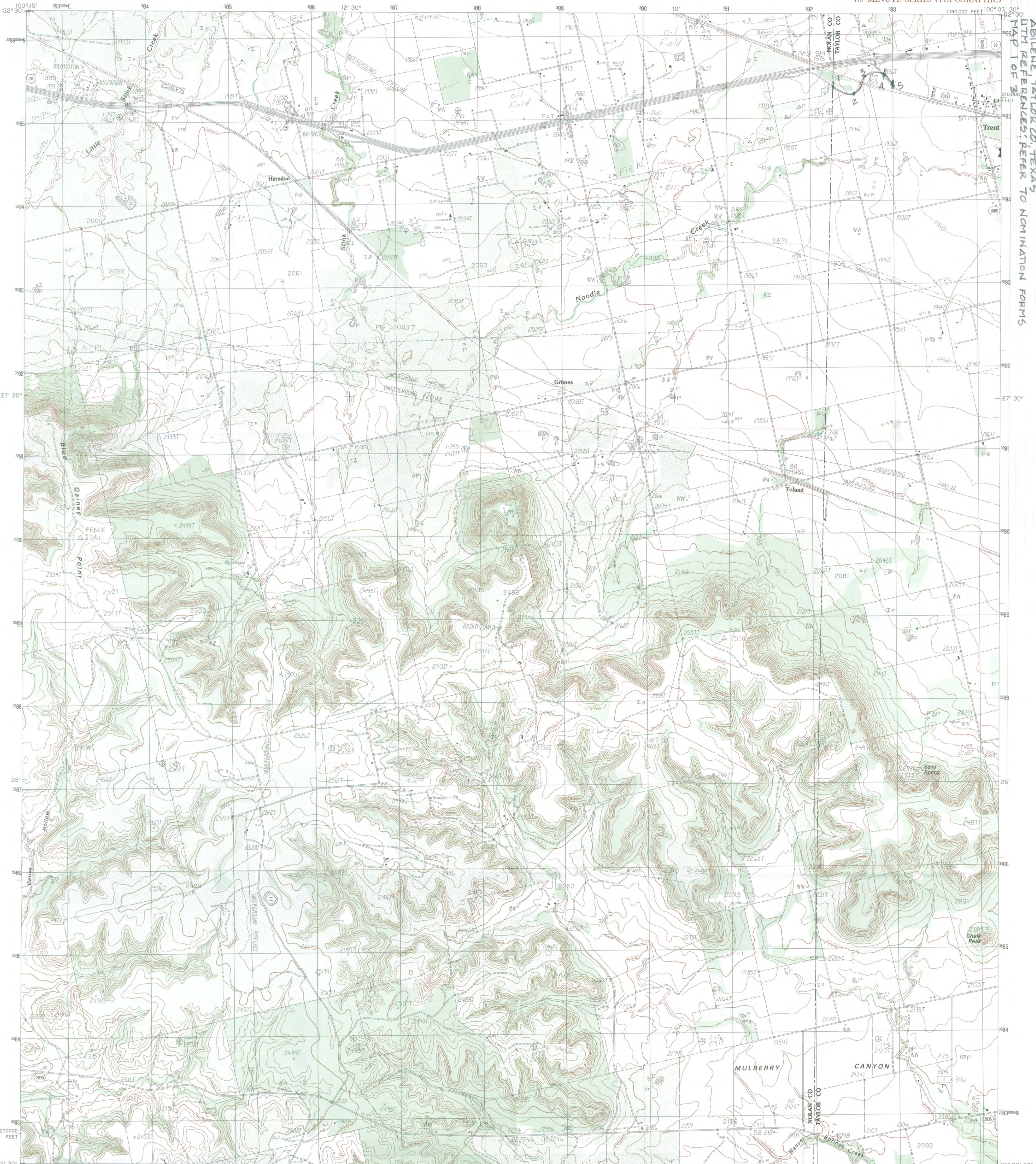
ROAD CLASSIFICATION

Primary highway, hard surface	Light duty road, hard or improved surface
Secondary highway, hard surface	Unimproved road
Interstate Route	U. S. Route
	State Route

THIS MAP COMPLIES WITH NATIONAL MAP ACCURACY STANDARDS  
FOR SALE BY U. S. GEOLOGICAL SURVEY, DENVER, COLORADO 80225, OR RESTON, VIRGINIA 22092  
A FOLDER DESCRIBING TOPOGRAPHIC MAPS AND SYMBOLS IS AVAILABLE ON REQUEST

3299-234

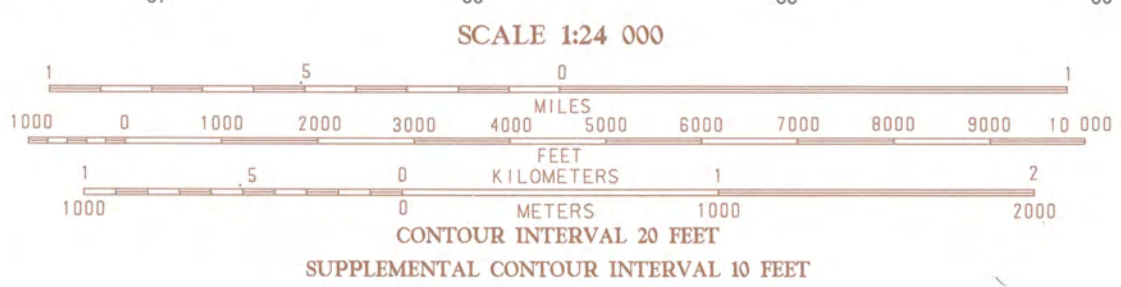
ABILENE WEST, TEX.  
NE/4 BUFFALO GAP 15' QUADRANGLE  
32099-D7-TF-024  
1957  
PHOTOREVISED 1987  
DMA 6048 IV NE - SERIES V882



BANKHEAD HIGHWAY HISTORICAL DISTRICT  
SECTION 4  
ADJACENT, TAYLOR CO., TEXAS  
UTM REFERENCES; REFER TO NOMINATION FORMS  
MAP 1 OF 3

PRODUCED BY THE UNITED STATES GEOLOGICAL SURVEY  
CONTROL BY . . . . . USGS, NOS/NOAA  
COMPILED FROM AERIAL PHOTOGRAPHS TAKEN . . . . . 1976  
FIELD CHECKED . . . . . 1978 MAP EDITED . . . . . 1984  
PROJECTION . . . . . LAMBERT CONFORMAL CONIC  
GRID: KILOMETER UNIVERSAL TRANSVERSE MERCATOR . . . . . ZONE 14  
1000-FOOT STATE GRID TICKS . . . . . TEXAS NORTH CENTRAL ZONE  
UTM GRID DECLINATION . . . . . 0° 38' WEST  
1984 MAGNETIC NORTH DECLINATION . . . . . 8° EAST  
VERTICAL DATUM . . . . . NATIONAL GEODETIC VERTICAL DATUM OF 1959  
HORIZONTAL DATUM . . . . . 1927 NORTH AMERICAN DATUM  
To place on the predicted North American Datum of 1983,  
move the projection lines as shown by dashed corner ticks  
(10 meters south and 35 meters east).  
There may be private inholdings within the boundaries of any  
Federal and State Reservations shown on this map.  
All marginal data and lettering generated and positioned by  
automated type placement procedures.

**PROVISIONAL MAP**  
Produced from original  
manuscript drawings. Informa-  
tion shown as of date of  
field check.



QUADRANGLE LOCATION

1	2	3	1 Babson
2	3	4	2 Raven Creek South
3	4	5	3 Noodle
4	5	6	4 Lake Shrewsbury
5	6	7	5 Market View
6	7	8	6 Hilder Creek
			7 Nolan
			8 Mountain Pass

ADJOINING 7.5' QUADRANGLE NAMES  
3200-143

ROAD LEGEND

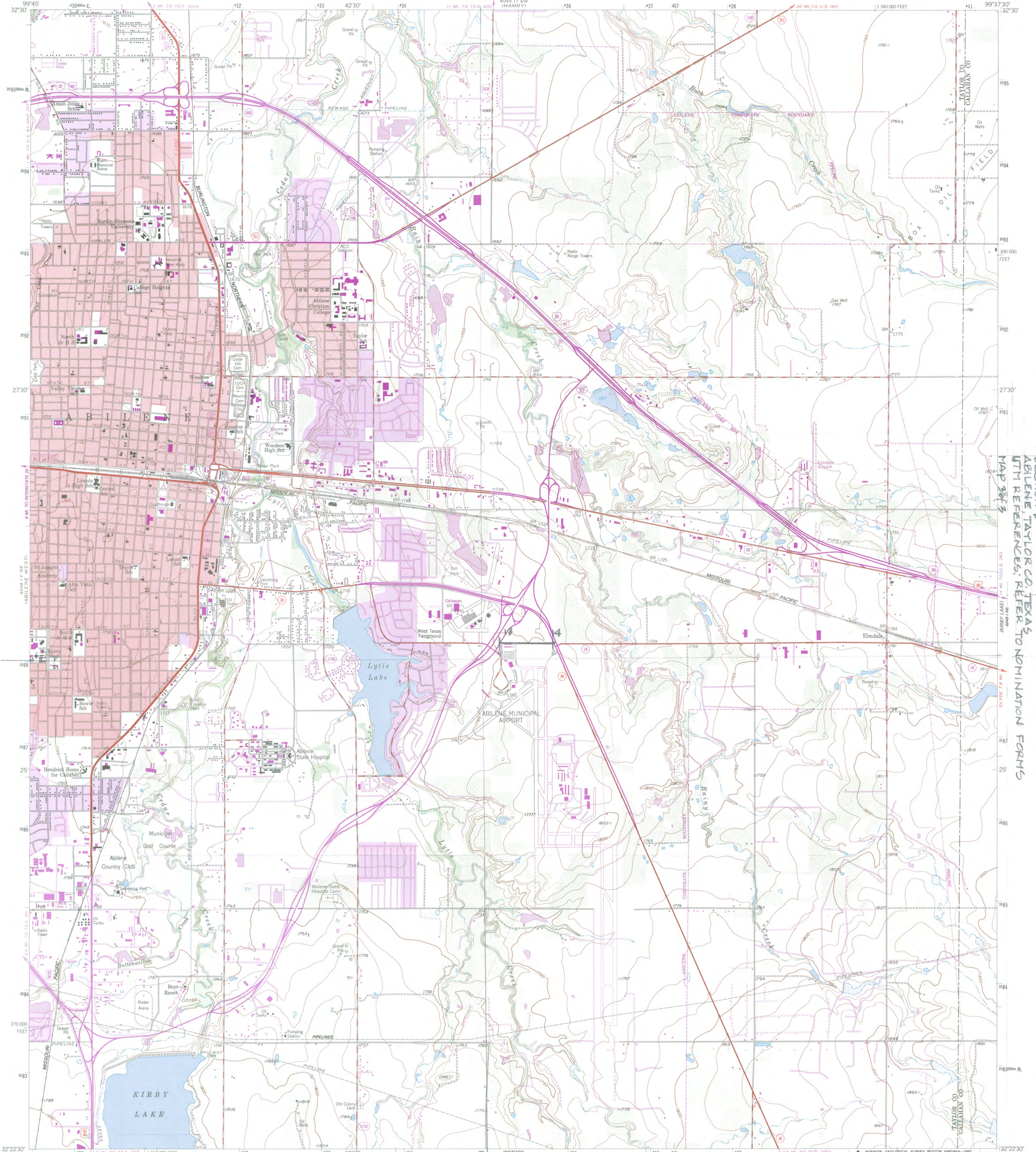
Improved Road . . . . .  
Unimproved Road . . . . .  
Trail . . . . .

Interstate Route U.S. Route State Route

CHALK PEAK, TEXAS  
PROVISIONAL EDITION 1984  
32100-D2-T024

THIS MAP COMPLIES WITH NATIONAL MAP ACCURACY STANDARDS  
FOR SALE BY U.S. GEOLOGICAL SURVEY, DENVER, COLORADO 80225  
OR RESTON, VIRGINIA 22092

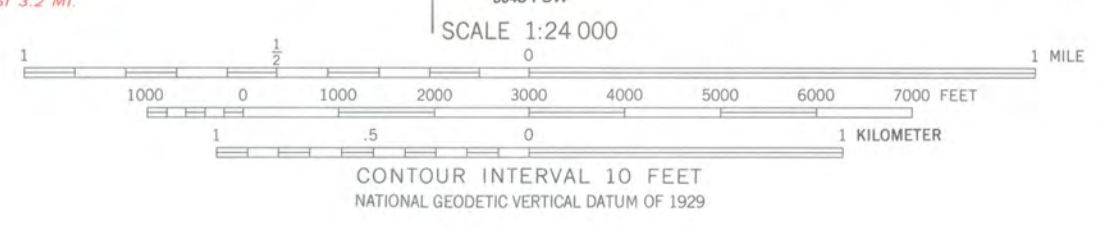




BANKHEAD HIGHWAY HISTORIC DISTRICT  
SECTION D  
ABILENE TAYLOR CO. TEXAS  
UTM REFERENCES; REFER TO NOMINATION FORMS  
MAP 3073

Mapped, edited, and published by the Geological Survey  
Control by USGS and NOS/NOAA  
Topography from aerial photographs by ER-55 plotter  
Aerial photographs taken 1954, field check 1957  
Polyconic projection, 1927 North American datum  
10,000-foot grid based on Texas coordinate system,  
north central zone  
1000-meter Universal Transverse Mercator grid ticks,  
zone 14, shown in blue  
Red tint indicates areas in which only  
landmark buildings are shown  
To place on the predicted North American Datum 1983,  
move the projection lines 10 meters south and  
34 meters east as shown by dashed corner ticks

Revisions shown in purple compiled from aerial  
photographs taken 1984 and other sources  
This information not field checked. Map edited 1987  
Purple tint indicates extension of urban area



ROAD CLASSIFICATION

Primary highway, hard surface	Light-duty road, hard or improved surface
Secondary highway, hard surface	Unimproved road

○ Interstate Route    □ U. S. Route    ○ State Route



THIS MAP COMPLIES WITH NATIONAL MAP ACCURACY STANDARDS  
FOR SALE BY U. S. GEOLOGICAL SURVEY, DENVER, COLORADO 80225, OR RESTON, VIRGINIA 22092  
A FOLDER DESCRIBING TOPOGRAPHIC MAPS AND SYMBOLS IS AVAILABLE ON REQUEST

3299-243

ABILENE EAST, TEX.  
NW/4 KIRBY LAKE 15' QUADRANGLE  
32099-D6-TF-024  
1957  
PHOTOREVISED 1987  
DMA 6048 1 NW - SERIES V882